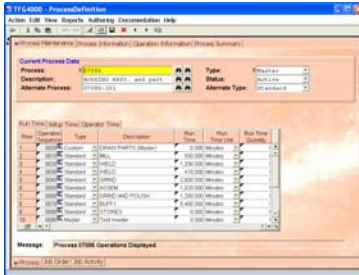


# JOB (WORK) ORDER MANAGEMENT

## Key Features

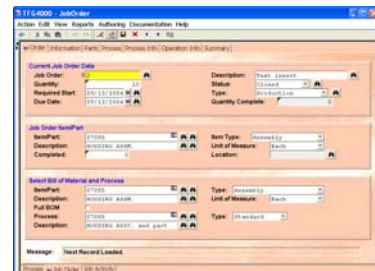


### PROCESS

- Define procedures/ services with minimal effort
- Outline the steps of your process including the sequence in which they should be performed
- Document preparation as well as completion times for each step of your process
- Record information about the entire process and each step for detailed instructions

### JOB ORDER

- Enter job orders/ services calls with minimal keystrokes
- Use predefined or customized process for a job order
- List all parts/ supplies needed to complete a job
- Modify the job order, process and parts list quickly and easily
- Seamlessly interface Job Order Management with Inventory Management so parts lists can be predefined and inventory can be managed



### OTHER FEATURES

- Powerful search capabilities
- View or Print a "pick list" of parts/ supplies needed to complete a job
- Automatically maintains a history of the parts/ supplies used
- Monitor the status of all orders
- Seamless Integration with other TFG4000 Applications

