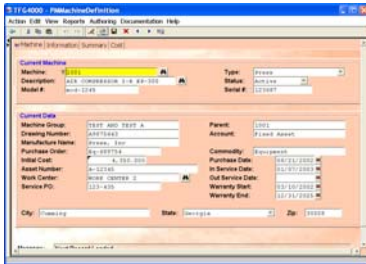


# TFG4000 MAINTENANCE MANAGEMENT

## Key Features

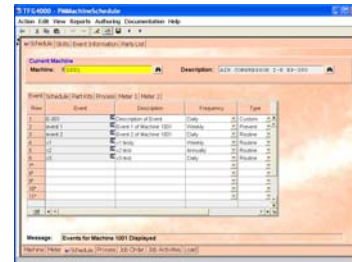


### Machine / Equipment

- Define a machine, piece of equipment or service.
- Establish the entity to be maintained by entering as little or as much data as you desire
- Enter basic data that fits your business requirements

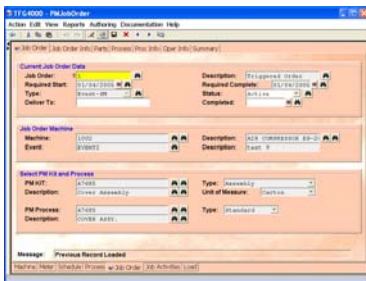
### Event / Task Scheduling

- Define the schedule for the event / task.
- Job/ work orders are generated and printed automatically on schedule.
- Define skills required to perform the event.
- Define additional material for the event.



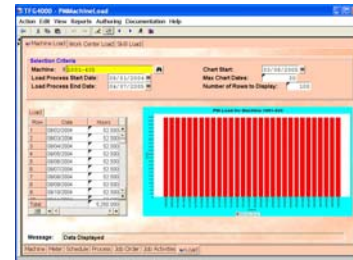
### Maintenance Job / Work Order

- Define what is needed to perform the maintenance or services
- Provide feedback of labor and material cost.
- Review machine / equipment cost to date.



### OTHER FEATURES

- Powerful search capabilities
- Flexible and robust reporting
- Full security
- Maintenance loading
- Customizable Fonts and Screen Colors
- Seamless Integration with other TFG4000 Applications



The Fredrick Group, Inc.  
 "Business Software Solutions"

(866) 679-9284 Phone (770) 573-9248 Fax

P.O. Box 1698 ♦ Cumming, GA ♦ 30028 ♦ [www.TFG4000.com](http://www.TFG4000.com)